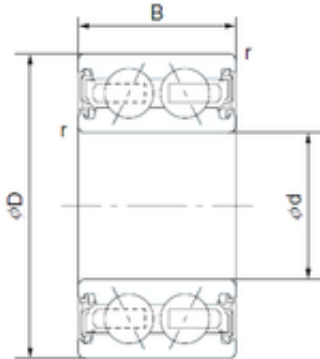




## NTA PRECISION AXLE CORP.

35 mm x 52 mm x 20 mm 35 mm x 52 mm x 20 mm CYSD 4607-4AC2RS angular contact ball bearings



Bearing No. 4607-4AC2RS

|                               |             |
|-------------------------------|-------------|
| Size                          | 35x52x20 mm |
| Bore Diameter                 | 35 mm       |
| Outer Diameter                | 52 mm       |
| Width                         | 20 mm       |
| d                             | 35 mm       |
| D                             | 52 mm       |
| B                             | 20 mm       |
| C                             | 20 mm       |
| Basic dynamic load rating (C) | 11 kN       |

4607-4AC2RS Bearing 2D drawings and 3D CAD models